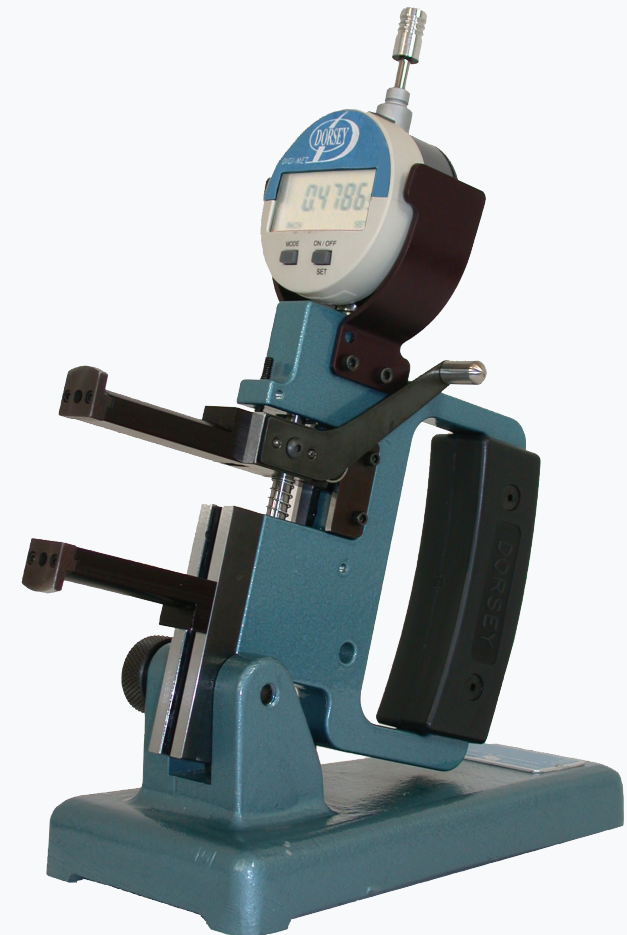
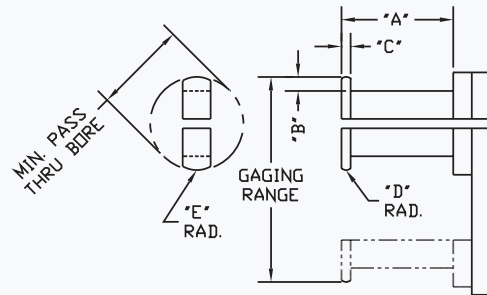
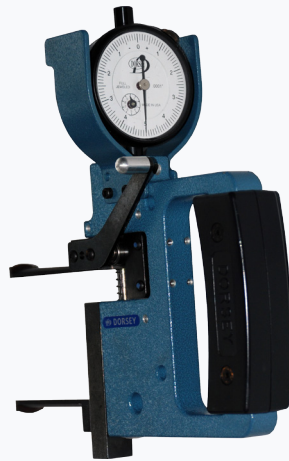


Dorsey's Dynamike Model DYN groove gage combines a patented ball bushing slide with a series of gaging arms to suit almost any application. Gaging contact retraction is accomplished by using a conveniently mounted thumb lever while gaging range adjustment is accomplished by sliding the static gaging arm along its precision ground rail.

FEATURES:

- ✓ .500" (13mm) of gaging travel/retraction.
- ✓ .75" to 3.50" (19mm - 88mm) diameter range.
- ✓ 3" Long precision ground adjustment rail.
- ✓ Precision machined cast jig plate frame.
- ✓ Thermal isolation grips.
- ✓ Can accommodate any of Dorsey "High Amplification", "Traditional", or digital indicator.
- ✓ Retraction pulls away from indicator.
- ✓ Indicator can be rotated 360 degrees to suit any application.



The DYN Groove Gage is supplied per model # below with DYN Groove Gage body, model # 2DM125-05 dial indicator, .0005" graduation, and the appropriate contact arm set for the range noted below.

PART #	RANGE	MIN / BORE	TYPE	"A" Dim.	"B" Dim.	"C" Dim.	CONTACT ARM #
DYN-750-2	.750 - 2.00	.500	2 Point	1.50	.125	.125	# 2405-2
DYN-750-3	.750 - 2.00	.500	3 Point	1.50	.125	.125	# 2405-3
DYN-2000-2	2.00 - 3.50	2.000	2 Point	2.00	.125	.125	# 2465-2
DYN-2000-3	2.00 - 3.50	2.000	3 Point	2.00	.125	.125	#2465-3
DYN-Blank-S*	To Suit	.370	2 Point	.750	.097	.125	# DS-LO-73054*
DYN-Blank-L*	To Suit	.850	2 Point	1.44	.206	.190	# DS-LO-73055*

PART #	DESCRIPTION
DYN-FRAME	DYN Groove Gage body only, less gaging arms and indicator
48502-S	For the Bench Stand used with the DYN gages
2335	Clamp nut used with part # 2405 & #2465 contact arms
DS-LO-2335	Clamp nut used with part # DS-LO-73054 AND # DS-LO-73055

*Note #1: Blank contacts can be used as supplied or modified to suit a specific application.

*Note #2: For pricing on special gaging arms to suit a specific application, submit the part print with your quotation. Arms can be ordered separately.